



## ACCESS SOLUTIONS Ramps, Steps and Platforms

QUADRABUILD







# Modular Access Solutions

---

## Overview

- The QuadraBuild metal modular ramp system provides high quality, cost effective access solutions for a wide range of situations from private houses to schools, hospitals and commercial premises.
- The system consists of standard modular components to create ramps, platforms and steps and ensures quick installation with minimal disruption.
- QuadraBuild provide a complete survey, design, supply and installation service.
- Our experienced team will discuss the user's needs and design a ramp to best suit the user, site restrictions, regulations and budget constraints.

Complementary services such as replacement doors, paving and landscaping can also be incorporated.

## Features and Benefits

- Fast installation
- Non-slip, free draining galvanised mesh surface as standard (other options available)
- Warm touch black top and mid handrails as standard
- Optional balustrade infill to handrails for aesthetics and where required for fall protection
- Extensive component range plus custom parts to suit almost all situations
- Adjustable and adaptable
- "Doc M" Building Regulations compliant







# Standard Rails & Platforms

Handrails are 900mm high on ramp sections. Platforms are increased to 1100mm high when required by Building Regulations.

Sleeved connectors provide a continuous handrail.

42mm diameter warm to the touch top rails.

Snag preventing trombone ends.

Ramp widths available from 900mm.

1000mm, 1200mm & 1500mm are all standard widths.

Multi directional non-slip, free draining ramp platforms. All finished with a hot dip galvanized coating.

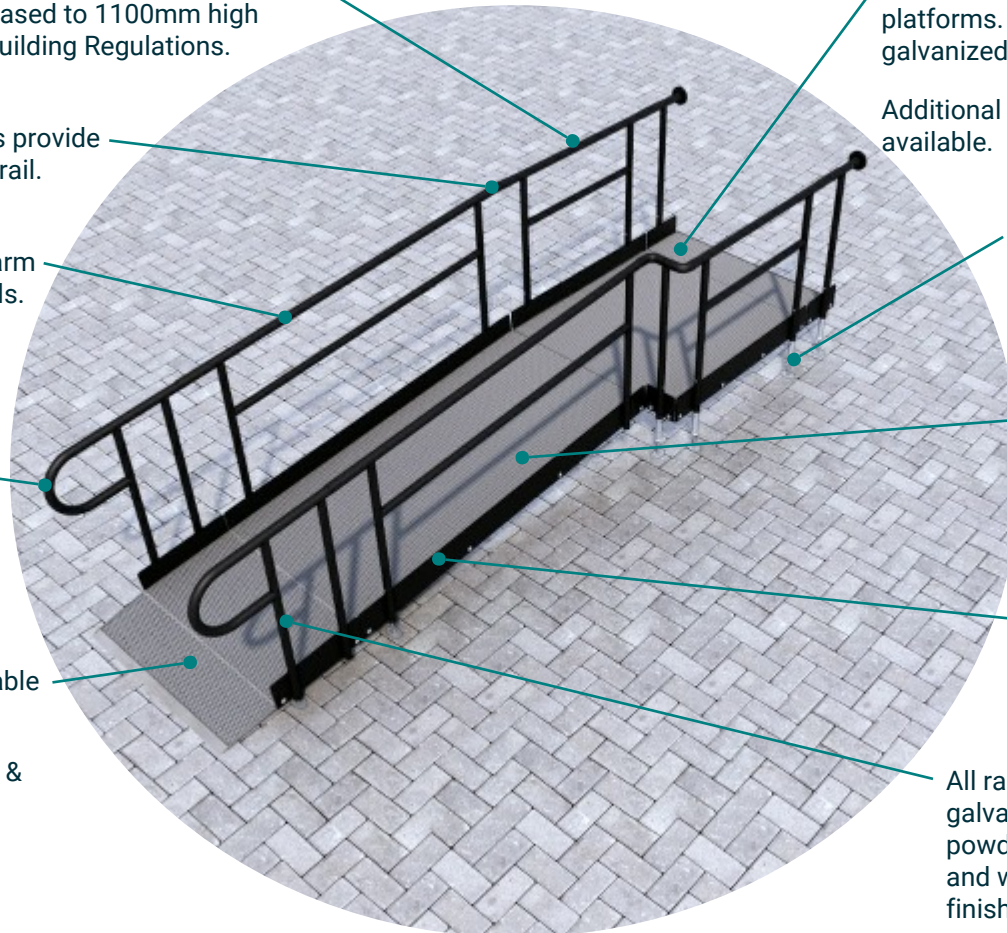
Additional surfaces such as liquid rubber available.

Fully adjustable bolt down legs, all finished with a coating of zinc plating.

Lift out panels available for accessing services beneath the ramp or platform.

100mm continuous upstand that provides a visual contrast with the ramp surface.

All rail sections are hot dip galvanized, etched and electrostatic powder coated providing a durable and warm to touch coating in a satin finish. Standard colour is black.









# Balustrade Rails & Platforms

Handrails are 900mm high on ramp sections. Platforms are increased to 1100mm high when required by Building Regulations.

Sleeved connectors provide a continuous handrail.

42mm diameter warm to the touch top rails.

Balustrade infill rails with 99mm maximum aperture.

Snag preventing trombone ends.

Ramp widths available from 900mm.

1000mm, 1200mm & 1500mm are all standard widths.

Multi directional non-slip, free draining ramp platforms. All finished with a hot dip galvanized coating.

Additional surfaces such as liquid rubber available.

Fully adjustable bolt down legs, all finished with a coating of zinc plating.

Visual contrast markers at changes in gradient.

Lift out panels available for accessing services beneath the ramp or platform.

100mm continuous upstand that provides a visual contrast with the ramp surface.

All rail sections are hot dip galvanized, etched and electrostatic powder coated providing a durable and warm to touch coating in a satin finish. Standard colour is black.

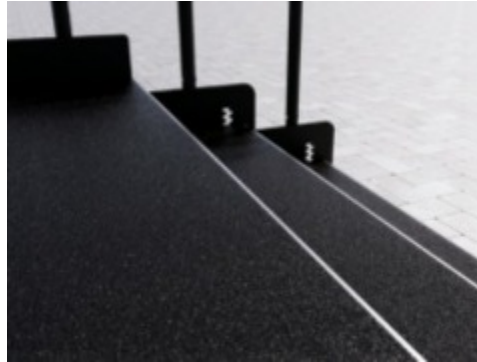
# Additional Options

## Step Units



Step units are an ideal addition to any ramp installation, providing the access needed for able-bodied users.

## Liquid Rubber & GRP Surfaces



Slip-resistant, non-corrosive surfaces ideal for areas with high footfall such as schools and public spaces.

## Below Ramp Infill



Mesh infill is designed to prevent unauthorised access and stop litter from blowing underneath the ramp.

## Access Panels



Access panels allow a panel to be lifted out, providing access to underground services and utilities.

## Mid Rails



Mid Rails are designed to be used by young children and wheelchair users.

## Contrast Bands



Contrast bands are a safety feature to identify the nose of the ramp or step and any changes in level or gradient.



# Complementary Services

## Paving



Paving can be used in conjunction with modular ramps or as a standalone ramp solution.

## Gates, Walls, Posts, Fences, etc



New walls, fences, posts and gates, along with modifications to existing where required, can all be included to achieve the most suitable access. Minor landscaping can also be undertaken in order to provide a complete package.



## Fillet Ramps



Rubber fillet ramps are an ideal addition, providing a simple solution to threshold access from 32mm to 70mm height.

## Handrails



The same type of handrails as used on the modular components can be used as standalone rails. They can even be used to create a continuous rail across a transition - from modular ramp to paved area for example.





# Materials

---

## Overview

All handrails are manufactured from 42mm diameter mild steel tube, hot dip galvanized, etched and powder coated. Every rail has a 100mm upstand from the platform in 5mm thick mild steel.

Black is the standard handrail colour.

All platforms are manufactured from 40x40x5 mild steel angle with a N7478 expanded metal surface which is a very effective multidirectional, non-slip surface ideal for adding grip to high traffic areas which offer slip resistance exceeding BS 7976 Part 2 : 2000. Post fabrication, all platforms are hot dip galvanized.

Adjustable legs are 33.4mm diameter mild steel tube with an adjustable fixing foot from 5mm thick mild steel. Post fabrication all legs/feet are bright zinc plated.

Additional surfaces may be applied to the platforms such as liquid rubber or quartz impregnated GRP.

There is no limit to the width or the length of a ramp providing local regulations, Building Regulations for example, are adhered to.

Custom colours, angled sections, lift out access panels, etc can all be customised to suit project requirements.





# Care & Maintenance

---

## Important Note

If your ramp is not correctly maintained, its integrity and slip resistance may be compromised. You should always ascend and descend a ramp with care, using the handrails provided. If you would like to discuss any care and maintenance issues please do not hesitate to call us.

With good care and basic maintenance your ramp equipment will provide many years of safe, reliable use. In most cases, all that is required is to keep all surfaces clean and free from debris. Where gravel and membrane is used under the surface, we would recommend using an appropriate weed killer to suppress future plant growth which can take root and germinate within the gravel (above the membrane).

All equipment when installed outdoors, will require regular checks during cold weather to ensure the surface is clear of ice and snow (salt may be applied for this purpose); it is the users responsibility to assess its usability in such conditions.

## Ramps & Handrails

- Handrails can be cleaned with warm water, a mild detergent and soft cloth. Abrasive cleaning pads should not be used as over time the surface will become scuffed and damaged.
- Ramp platforms and sections can be cleaned with water, a mild detergent and a hard brush where required. In most cases debris below the ramp can simply be brushed away. Weed killer should also be used, where required, to suppress plant growth.
- The Modular Ramp and Handrail, have a durable and robust coating. Should an impact remove any of the galvanised/powder coated finish, a rust prevention treatment should be applied as soon as possible. We can supply matching paint or galvanisation spray, if required.
- It is advisable to conduct a periodic visual check, ensuring the fixings are secure. If you notice wear and tear, broken or damaged components, or if there is a change of usage (e.g. a different style of powered chair/scooter), contact us for help and advice.

## Rubber Fillet Ramps

- Cleaning can be undertaken using warm water, a mild detergent (such as washing up liquid) and soft brush; in most instances the ramp can be lifted to brush away debris.
- Holes in the surface allow water to drain away but need to be considered with young children as fingers may become trapped; we advise putting the ramp out of reach or covering where necessary to avoid such incidents. We also recommend that shoes with a sturdy heel be worn when the ramp is in use.



QuadraBuild Ltd

Unit 1, Falkland Farm

Andover Road

Wash Water

Newbury

RG20 0LP

020 8644 5434

[sales@quadrabuild.com](mailto:sales@quadrabuild.com)

[www.quadrabuild.com](http://www.quadrabuild.com)



QUADRABUILD