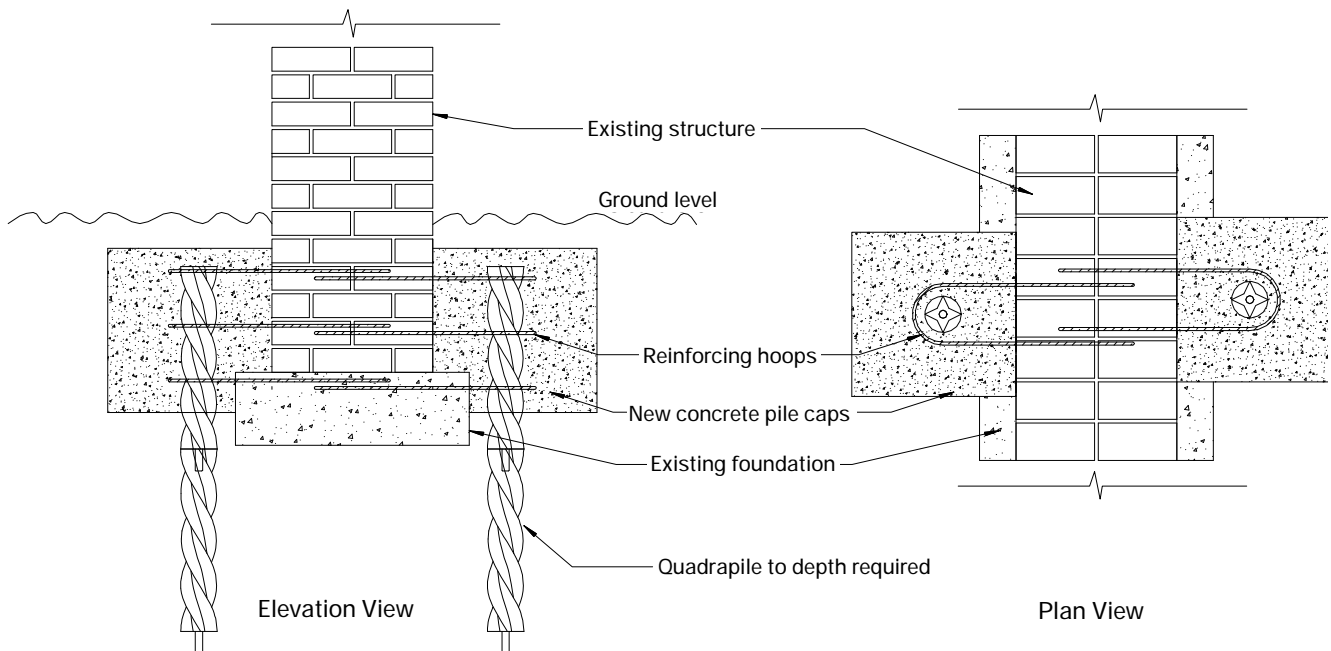




## Underpinning Foundations using QuadraPile on Two Sides



## METHOD STATEMENT

1. Create small excavations adjacent to the existing wall and foundations.
2. Drive a QuadraPile through the bottom of each excavation and load test to the specified requirement.
3. Drill into the existing foundations and wall below ground level with pairs of holes each side of each pile.
4. Install stainless steel helical reinforcing material using grout, in accordance with the method in HTG-01, but leave the reinforcing as a hoop around the pile and back into the hole on the opposite side.
5. Fill the excavations with concrete to encase the pile tops and reinforcing, ensuring that the concrete is well vibrated to fill all voids.

GUIDANCE NOTES *Unless otherwise specified, the following criteria are to be used:*

- a. Excavation to be 450x450x450mm.
- b. Reinforcing to be installed at least 200mm into wall and foundations.
- c. Minimum of 3 hoops of reinforcing should be used around each pile.
- d. Pile spacing will be dependent on loads to be supported and should be specified by the designer.
- e. Where masonry is not sufficient to span between pile points, beaming should be used in the masonry as per HB-08 or HB-09.

*To find out more and to see how we could help you, please contact us*

[info@quadrabuild.com](mailto:info@quadrabuild.com) | 02086 445 434 | [www.quadrabuild.com](http://www.quadrabuild.com)

