

### THE CHALLENGE

During an extensive refurbishment project, it was discovered that the service room at the top of a high-rise block of flats had unstable inner leaf masonry, due to lack of wall ties.

Dismantling and re-building would have meant relocating numerous services, so stabilising in-situ was preferable

### THE SOLUTION

We installed stainless steel helical ties through the inner leaf and into the concrete frame outer leaf to restrain the masonry.

Trial tests were carried out to ensure adequate load capacity was achieved. All required

equipment was easily carried to the top floor and the work caused minimal disturbance to the residents of the flats.

✓ Minimal disruption

✓ Clean, fast, efficient

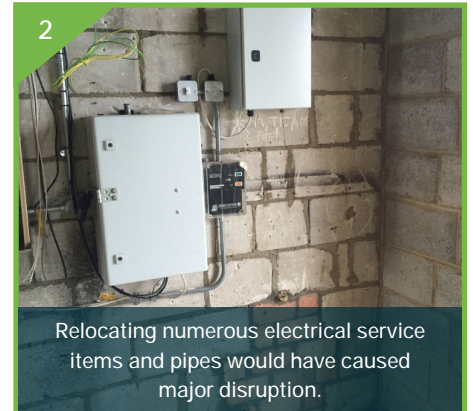
✓ No mess foundations

✓ Limited access sites

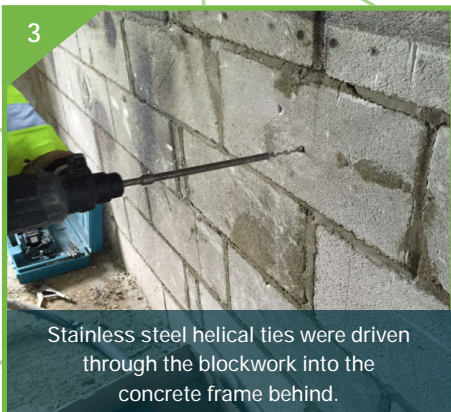
## QUADRAFIX THE PROCESS



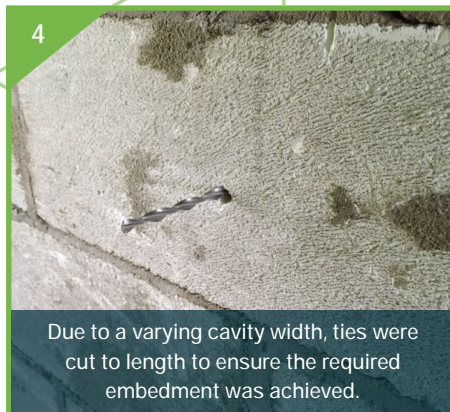
1 The service room was located at the top of a high-rise block of flats.



2 Relocating numerous electrical service items and pipes would have caused major disruption.



3 Stainless steel helical ties were driven through the blockwork into the concrete frame behind.



4 Due to a varying cavity width, ties were cut to length to ensure the required embedment was achieved.



5 Load testing was carried out to ensure adequate load capacity

To find out more and to see how we could help you, please contact us

[sales@QuadraBuild.com](mailto:sales@QuadraBuild.com) | 02086 445 434 | [www.QuadraBuild.com](http://www.QuadraBuild.com)

