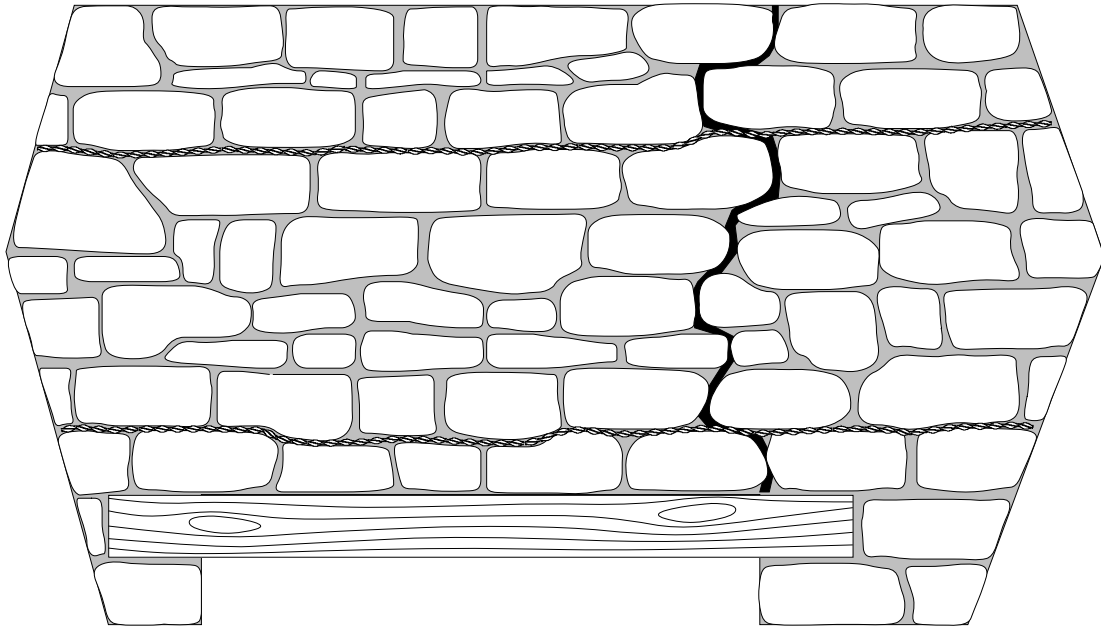




Strengthening of Lintels in Random Stone Walls



METHOD STATEMENT

1. Rake out or cut slots into horizontal mortar joint to specified depth and at required vertical spacings.
2. Vacuum out the slots and thoroughly flush with water.
3. Insert a 10 mm (approx) depth bead of cementitious grout into back of the slot.
4. Push first helical bar rod into the bead of grout to obtain good even coverage.
5. Insert a second 10 mm (approx) depth bead of cementitious grout up against existing grout.
6. Push second helical bar rod into the bead of grout to obtain good even coverage.
7. Insert a bead of cementitious grout over the exposed rod and iron into the slot using the finger trowel.
8. Point up or fill the joint and leave ready for any decoration.

GUIDANCE NOTES *Unless otherwise specified, the following criteria are to be used:*

- a. Depth of slot to be 55 to 75 mm
- b. Top and bottom reinforcements should be positioned as far apart as practicable, up to a maximum distance of approximately 0.9 m.
- c. Where helical bars have to be joined in long runs a minimum of 500 mm overlap should be allowed
- d. Helical bar to extend a minimum of 500 mm each side of any crack. Where a crack is within 300 mm of the end of a wall the helical bar is to be continued for at least 500 mm around the corner and be bonded into the adjoining wall.

To find out more and to see how we could help you, please contact us

info@quadrabuild.com | 02086 445 434 | www.quadrabuild.com

