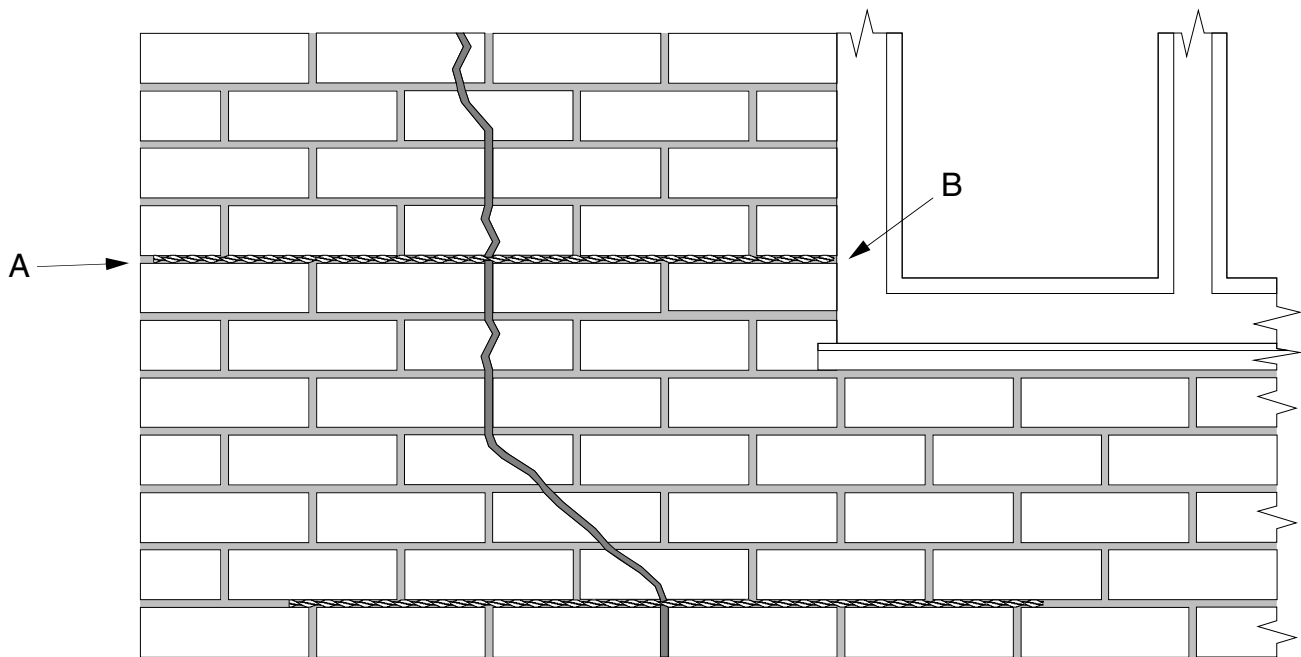




Crack Stitching - General



METHOD STATEMENT

1. Rake out or cut slots into horizontal mortar joint to specified depth and at required vertical spacing.
2. Vacuum out the slots and thoroughly flush with water.
3. Using the grout gun insert a bead of cementitious grout into the back of the slot.
4. Push the helical bar crack stitch into the grout to obtain good coverage.
5. Insert a bead of cementitious grout over the exposed rod and iron into the slot using the finger trowel.
6. Point up or fill the joint and leave ready for any decoration.

GUIDANCE NOTES *Unless otherwise specified, the following criteria are to be used:*

- a. Depth of slot to be 25 to 35 mm.
- b. Helical bar to extend a minimum of 500 mm each side of the crack.
- c. Normal vertical spacing of crack stitches is 450 mm (6 brick courses).
- d. Where a crack is within 500 mm of the end of a wall (as in A above) the helical bar is to be continued for at least 100 mm around the corner and fixed into the adjoining wall.
- e. Where a crack is within 500 mm of an opening (as in B above) the helical bar is to be bent back and fixed into the reveal.

To find out more and to see how we could help you, please contact us

info@quadrabuild.com | 02086 445 434 | www.quadrabuild.com

