

### THE CHALLENGE

A brick building had a section on one corner which was moving and therefore causing cracking of the masonry. The main issues were:

- Leaking drains causing wash-out from under and around the foundations.
- The gas supply to the building also entered at the affected area.

### THE SOLUTION

We designed a solution using masonry repair and QuadraPile underpinning.

Leaking drains were repaired and the gas main isolated before we installed bed joint reinforcement in the walls.

QuadraPile helical piles were installed in small excavations at

the base of the wall and were tied into the foundations using stainless steel helical bar and concrete pile caps. Once completed, the repair was almost invisible.

This system avoided needing to relocate the gas main and leave the resident without gas for a significant time.

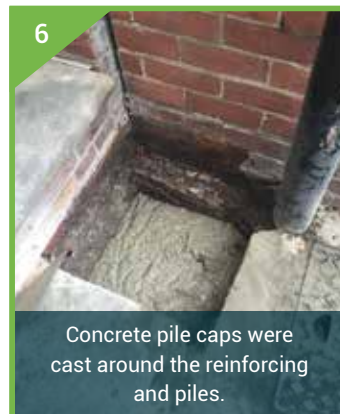
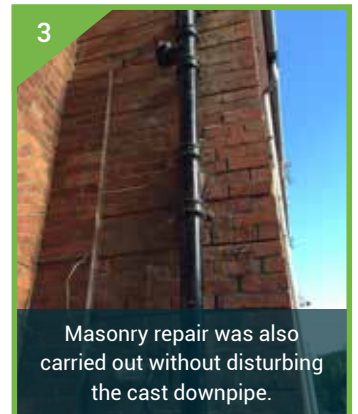
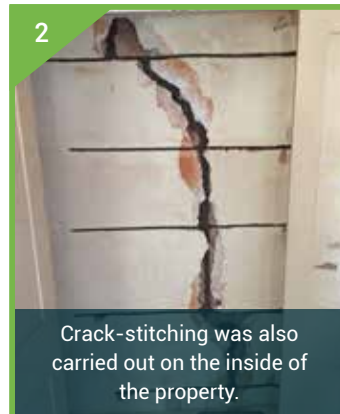
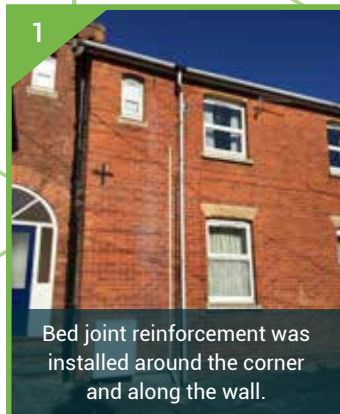
✓ Minimal disruption

✓ Clean, fast, efficient

✓ No mess foundations

✓ Limited access sites

### QUADRAFIX THE PROCESS



To find out more and to see how we could help you, please contact us

[sales@QuadraBuild.com](mailto:sales@QuadraBuild.com) | 02086 445 434 | [www.QuadraBuild.com](http://www.QuadraBuild.com)

